

- 1 – EPS**
- 2 – M4**
- 3 – Lumber**
- 4 – Lumber**

Compliance with the following codes

- 2015 and 2012 International Residential Code (IRC)

Fire-resistance Wall Assemblies

- M4 Sheathing ½" thickness is rated as Classification B. according CAN/ULC S124-06, Standard Method of Test for the Evaluation of Protective Coverings for Foamed Plastic
- M4 Sheathing Non Combustible according ASTM E 136

The building code definition of an approved thermal barrier is one which is equal in fire resistance to 12.7 mm (1/2 inch) gypsum board. All building codes require an approved thermal barrier on the habitable side of a structure between the interior of the structure and the polyurethane foam

M-Thermo-Panel

If extended R value is demanded the M-Thermo Panel can be applied as continuous insulation, range: R6 – R19.

Compliance with the following codes

- Must follow, ICC AC 04 ASTM E 72 testing report RJ5290P-3,4,5
- Must follow, the M-Sips Installation manual

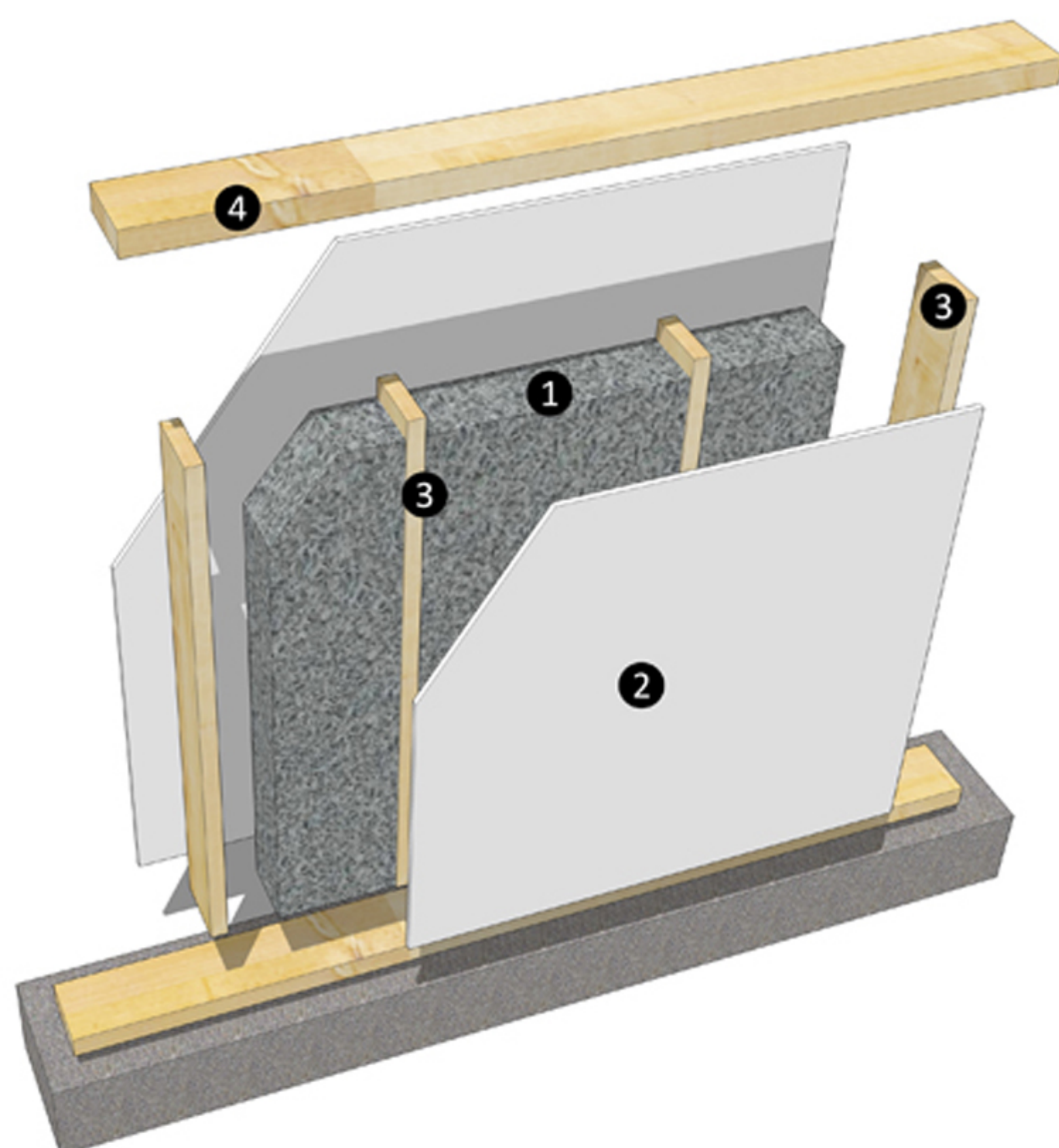
M-SIPs Panel – Specifications (Insulation type EPS- Neopor)

- R27 – 6.61" x 4' x 8'
- R38 – 8.34" x 4' x 8'

Panel length: on request up to 10'

Conditions of use

- Type V-B for Exterior Walls.



- 1 – EPS
- 2 – M4
- 3 – Lumber
- 4 – Lumber

Compliance with the following codes:

- 2015 and 2012 International Building Code (IBC)
- 2015 and 2012 International Residential Code (IRC)

Fire-resistance Wall Assemblies:

- M4 Sheathing ½" thickness is rated as Classification B. according CAN/ULC S124-06, Standard Method of Test For the Evaluation of Protective Coverings For Foamed Plastic
- M4 Sheathing Non Combustible according ASTM E 136

The building code definition of an approved thermal barrier is one which is equal in fire resistance to 12.7 mm (1/2 inch) gypsum board. All building codes require an approved thermal barrier on the habitable side of a structure between the interior of the structure and the polyurethane foam.

M-Thermo-Panel

If extended R value is demanded the M-Thermo Panel can be applied as continuous insulation, range: R6 – R19.

Installation – Design:

- Must follow, ICC – ES report ESR -3840
- Must follow, the M-Sips Installation manual

Conditions of use:

- Type I, II III or IV exterior walls limited to 40 feet in height.

M-SIPs Panel – Specifications (Insulation type EPS- Neopor)

- R27 – 6.61" x 4' x 8'
- R38 – 8.34" x 4 x 8'

Panel length: on request up to 20'